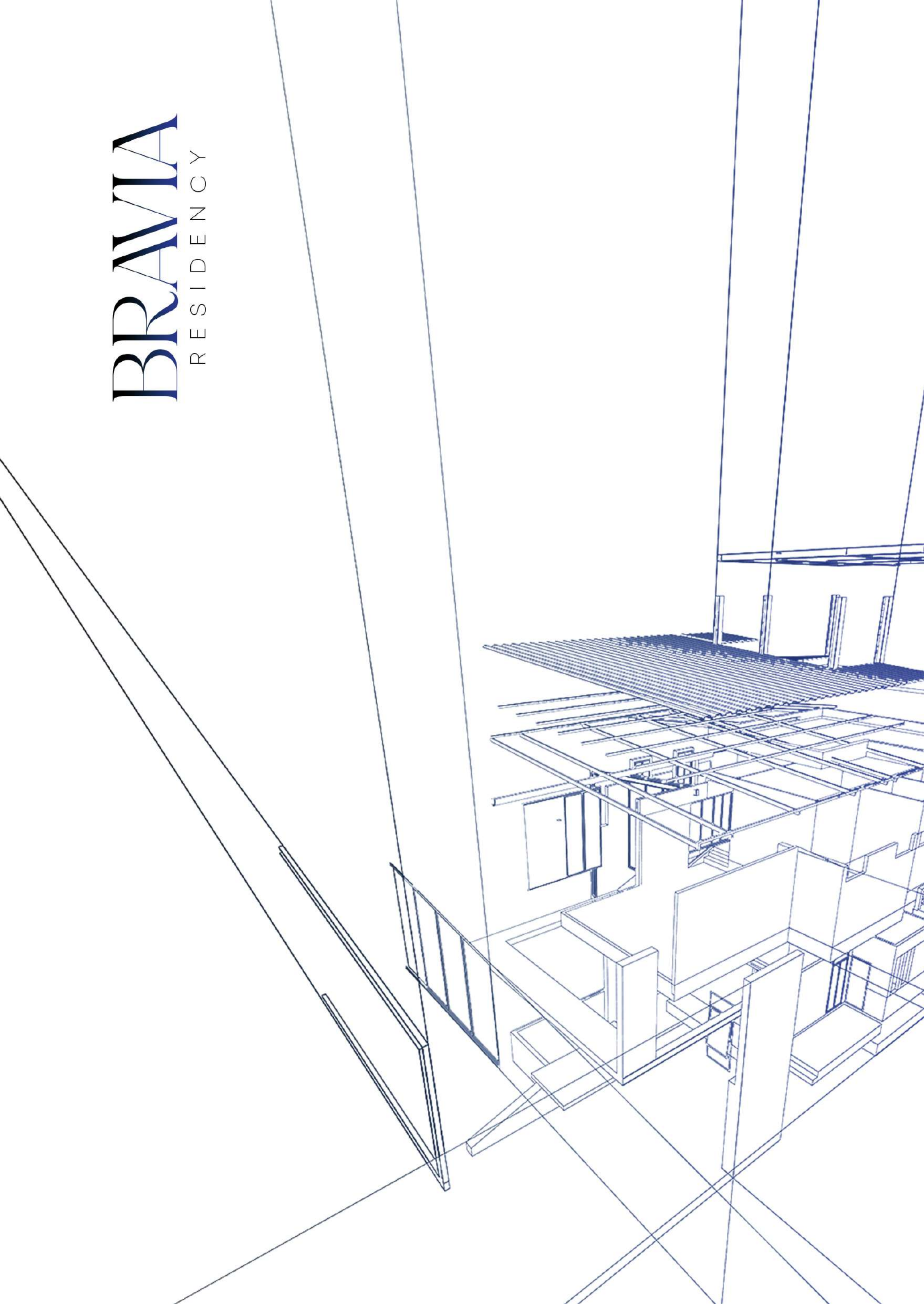


BRAWIA

RESIDENCY





BRAVIA

R E S I D E N C Y

BY EWI

www.braviareidencyghana.com



BRAVIA

RESIDENCY

AN ABODE OF YOUR ASPIRATIONS



Bravia Residency is a stunning residential building that boasts 36 luxurious one and two bedroom apartments, complete with an array of lifestyle amenities. These beautiful homes are situated in the highly sought-after and well-connected Ringway Estate in Osu, which is one of the most prime locations in Accra.



BRAVIA

RESIDENCY

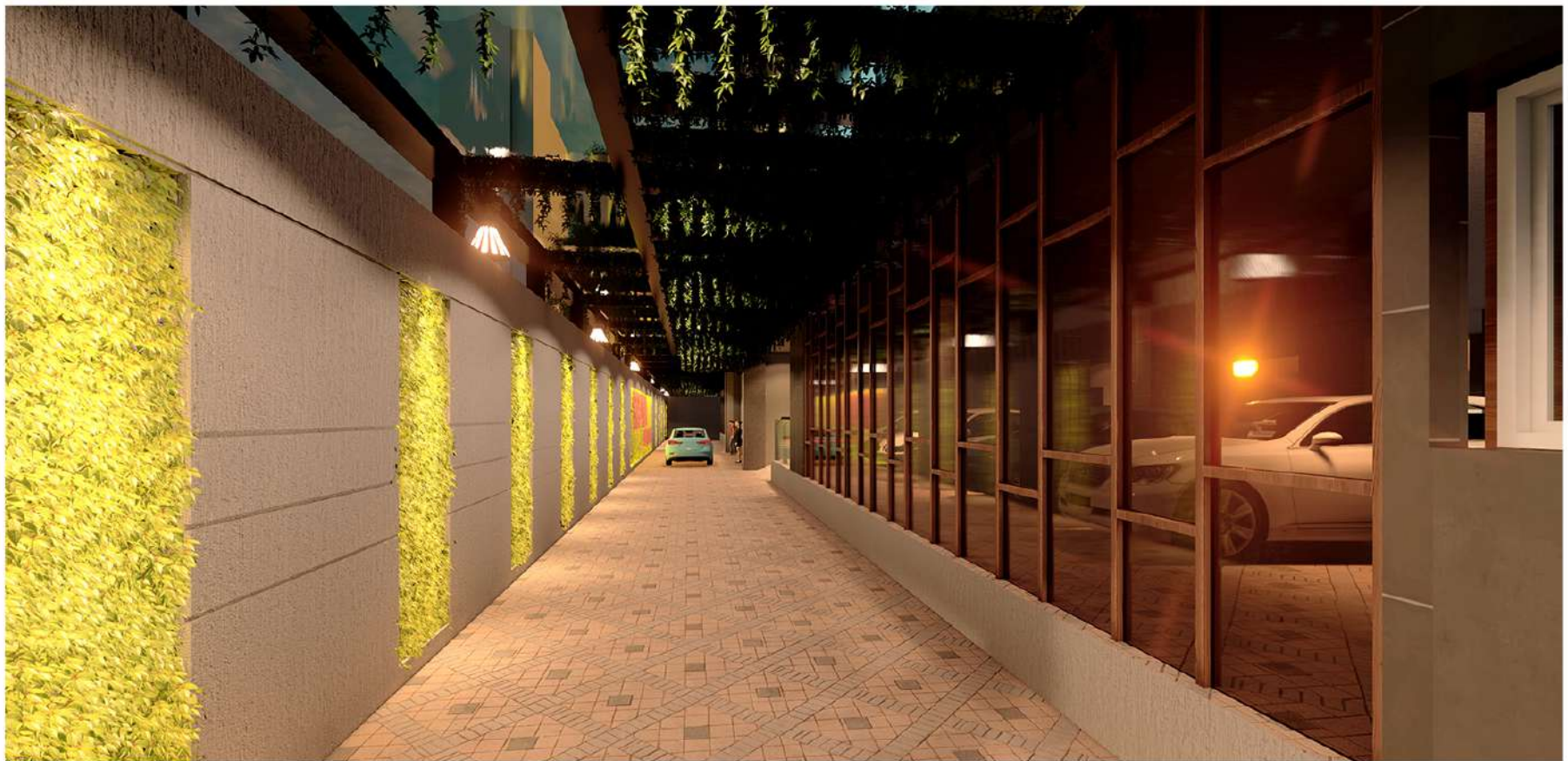
The Bravia Residency is meticulously designed with contemporary luxuries and comfort in mind, offering a life of your dreams with our Studio 1 & 2 Bedroom options.

- B+ G+ 8 STOREY OF PRIVILEGE LIVING & EXPERIENCE
- STUDIO 1 & 2 BEDROOM APARTMENTS
- AMPLE PARKING SPACE
- WELL CONNECTED LOCATION
- WALKING DISTANCE FROM OXFORD STREET
- 10 MINS DRIVE TO AIRPORT AND DIPLOMATIC ENCLAVE
- NEAR BRITISH HIGH COMMISSION
- WORLD CLASS AMENITIES
- AMAZING CARPET AREA EFFICIENCY
- EFFECTIVE SPACE UTILIZATION

FOR YOUR

Amazing Arrival

This luxurious entrance apartment is a stunning representation of beauty and refinement. As soon as you step inside, you'll be captivated by its grandeur, which hints at the opulence that awaits.



BRAVIA



MAGNIFICENT ENTRANCE

A PEACEFUL Majestic Experience

A double heightened foyer is designed with the finest materials and brilliant craftsmanship creating an ambiance that is not just sophisticated but also warm and inviting.



DOUBLE HEIGHT ENTRANCE LOBY & RECEPTION AREA



2 PASSENGER LIFTS



BRAVIA

IT'S AN Aquatic Paradise

Take a dip in this sparkling blue swimming pool to completely rejuvenate your body, mind, and soul. It's the perfect tranquil escape from the stress and anxiety of daily life.



BRAVIA

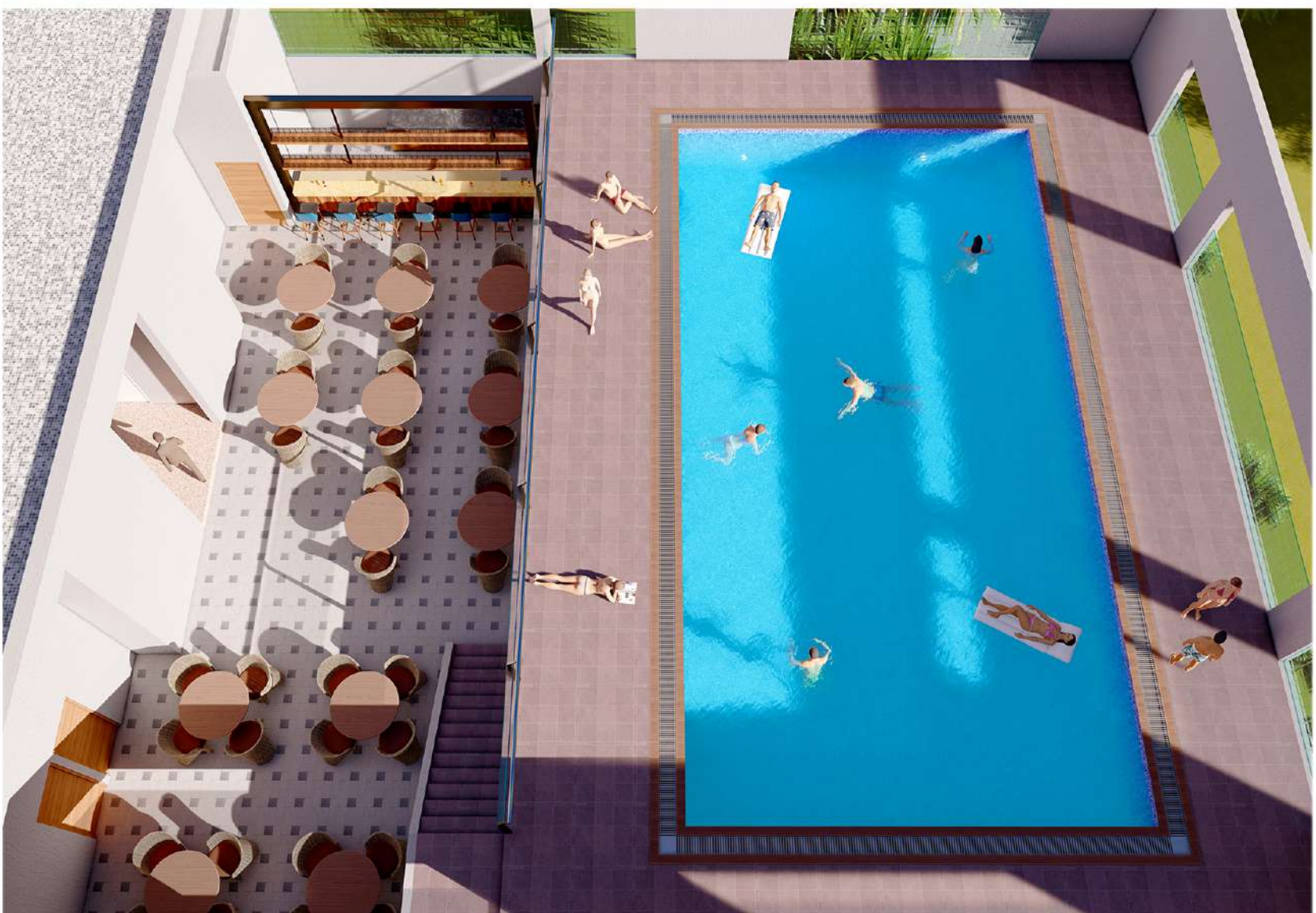
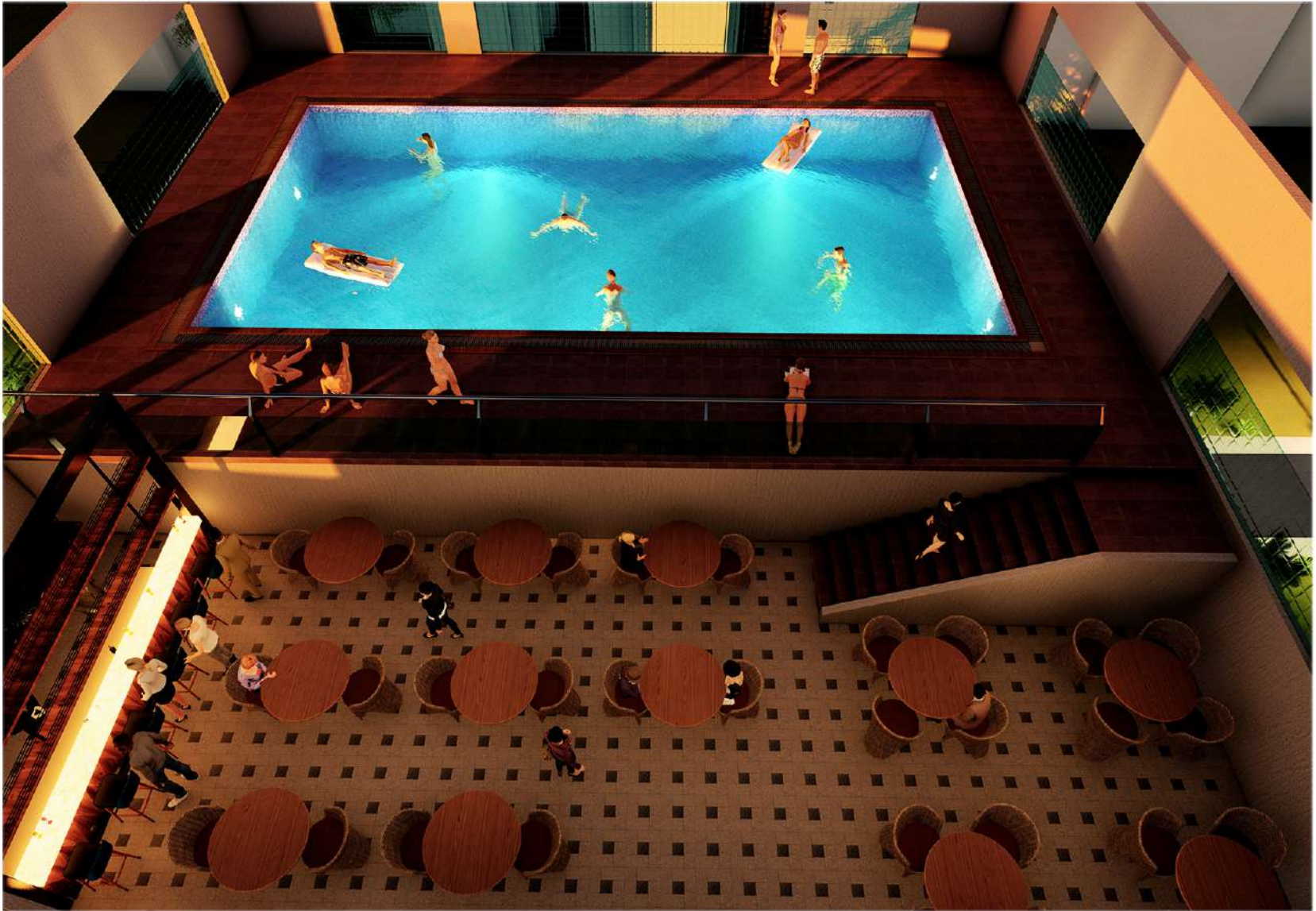


SWIMMING POOL



POOL DECK SIT-OUTS

FOR YOUR **Exquisite
Rooftop Lounge**

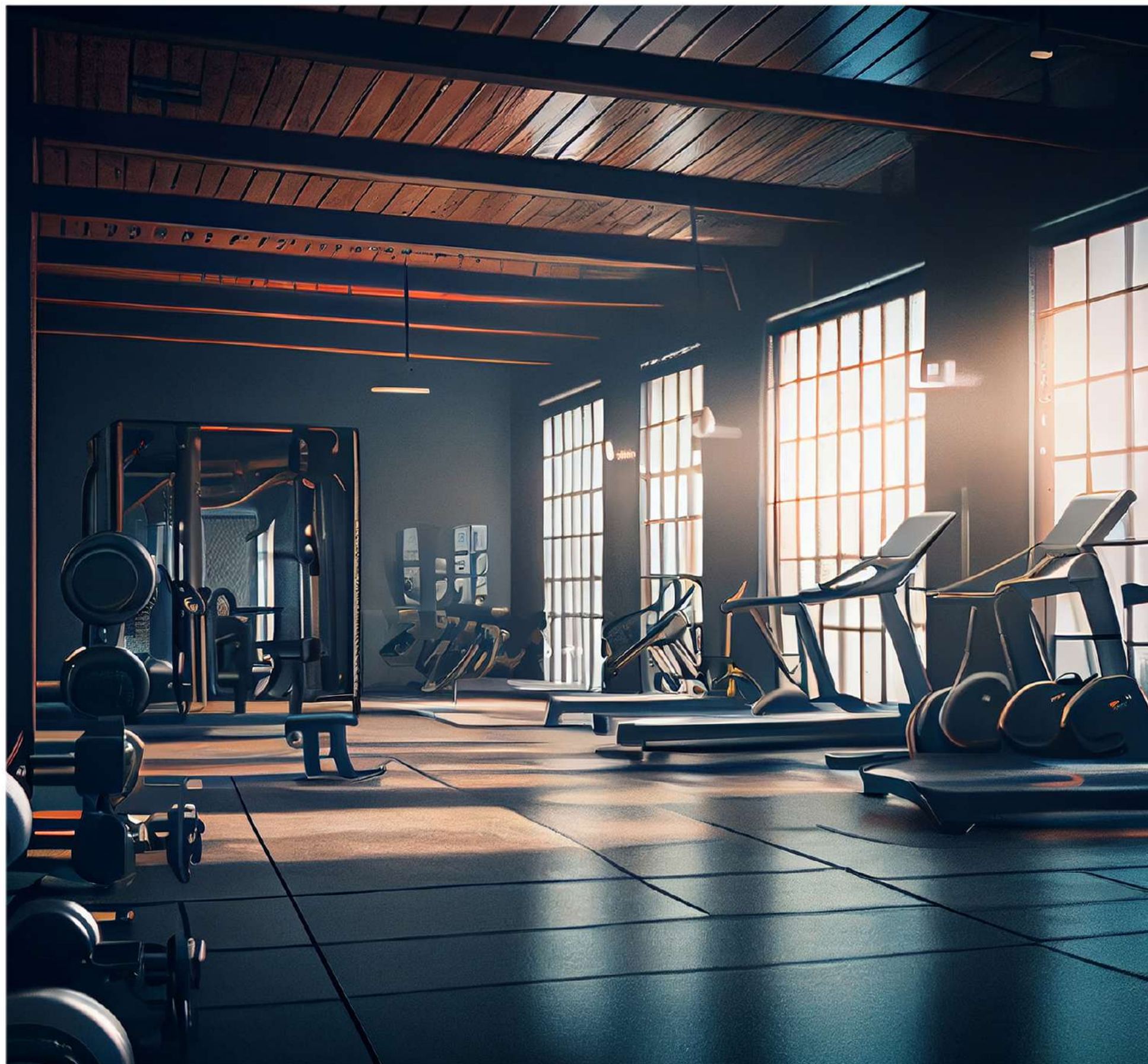


SWIMMING POOL



AN IDEAL **Way to Stay Fit**

With the latest fitness equipment, this advanced gymnasium assists in shedding excess calories and maintaining a fit physique, making it a fantastic spot to exercise.



BRAVIA



STATE-OF-THE-ART GYMNASIUM

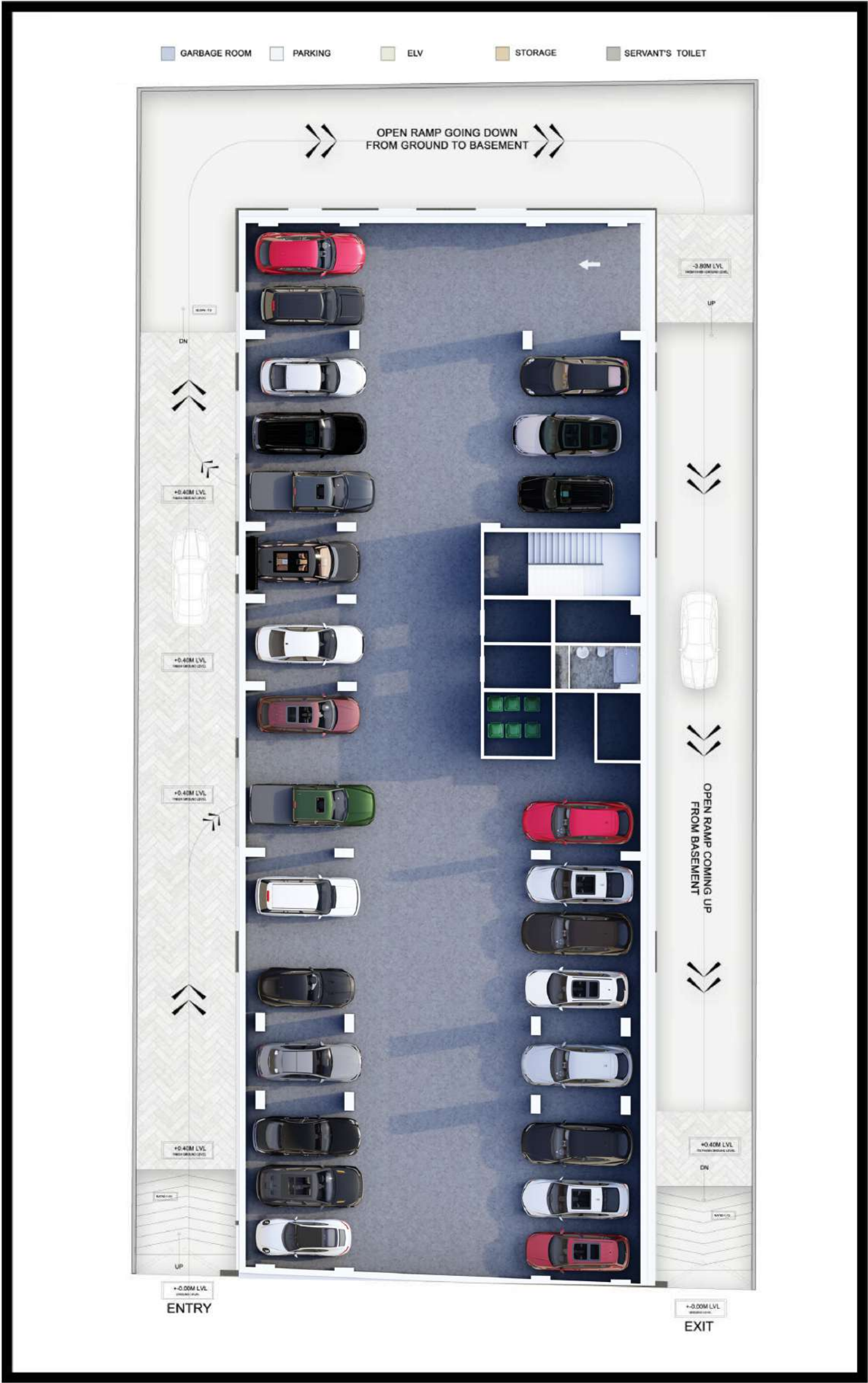
FOR YOUR **Spacious Office Area**



BRAVIA

SPACIOUS OFFICES





60 Parking Lots

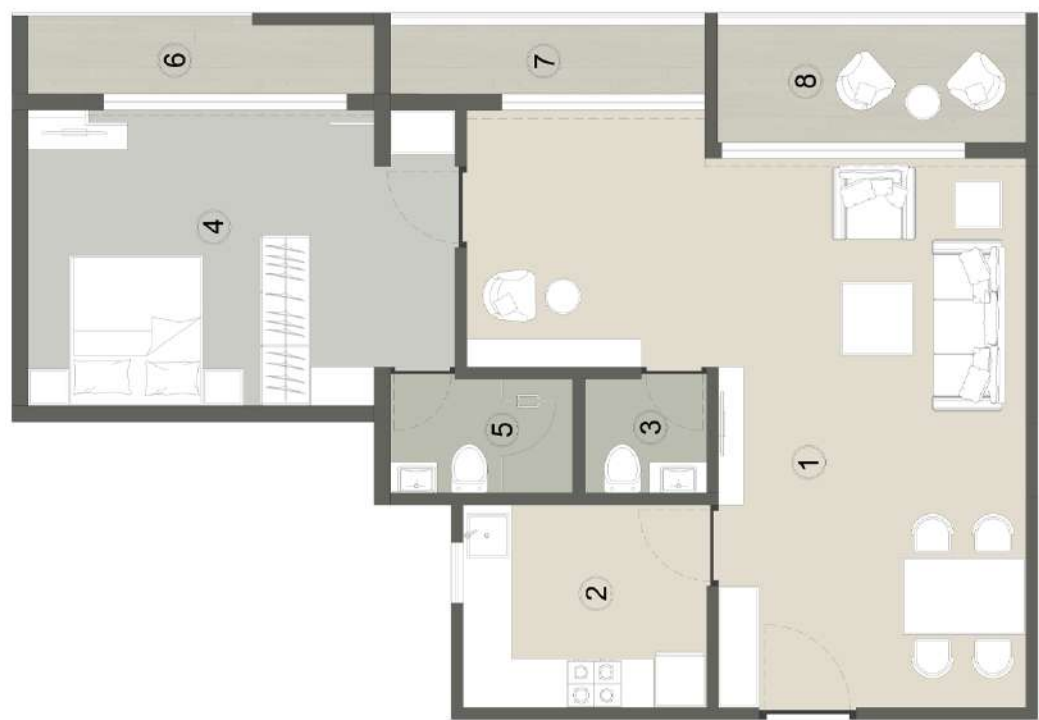


GYM CHANGING ROOMS TOILETS



TERACE FLOOR PLAN

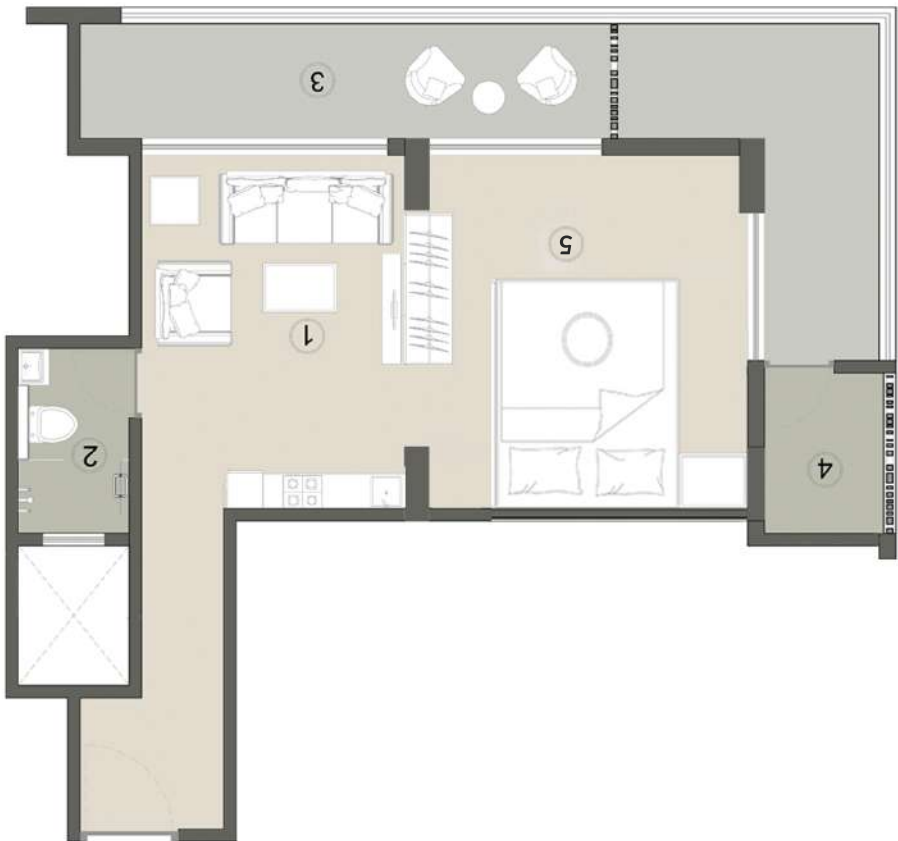
1 BHK TYPE 1



- | | |
|------------------|---------------------|
| 1) LIVING ROOM | :- 6775MM X 6890MM |
| 2) KITCHEN | :- 2500MM X 3000MM |
| 3) POWDER TOILET | :- 1400MM X1500MM |
| 4) BEDROOM | :- 3625MM X 5260MM |
| 5) TOILET | :- 1400MM X 2250 MM |
| 6) BALCONY 1 | :- 850MM X 4262 MM |
| 7) BALCONY 2 | :- 850MM X 3880MM |
| 8) BALCONY 3 | :- 1450MM X 3810 MM |

Carpet Area	= 81.75 SQ.M
Built Up Area	= 91.50 SQ.M
Floor	= 6TH, 7TH & 8TH

1 BHK TYPE 2



- 1) LIVING ROOM :- 4300 MM X 3200 MM
- 2) TOILET :- 1350 MM X 2250 MM
- 3) BALCONY :- 9725 MM X 4100 MM
- 4) AC OUTDOOR UNIT :- 1450 MM X 1950 MM
- 5) BEDROOM :- 4375 MM X 3875 MM

Carpet Area = 63.50 SQ.M
Built Up Area = 73.02 SQ.M
Floor = 3RD

1 BHK TYPE 3



- 1) LIVING ROOM :- 4300 MM X 3200 MM
- 2) TOILET :- 1350 MM X 2250 MM
- 3) BALCONY :- 3185 MM X 4100 MM
- 4) AC OUTDOOR UNIT :- 1450 MM X 1950 MM
- 5) BEDROOM :- 4375 MM X 3875 MM

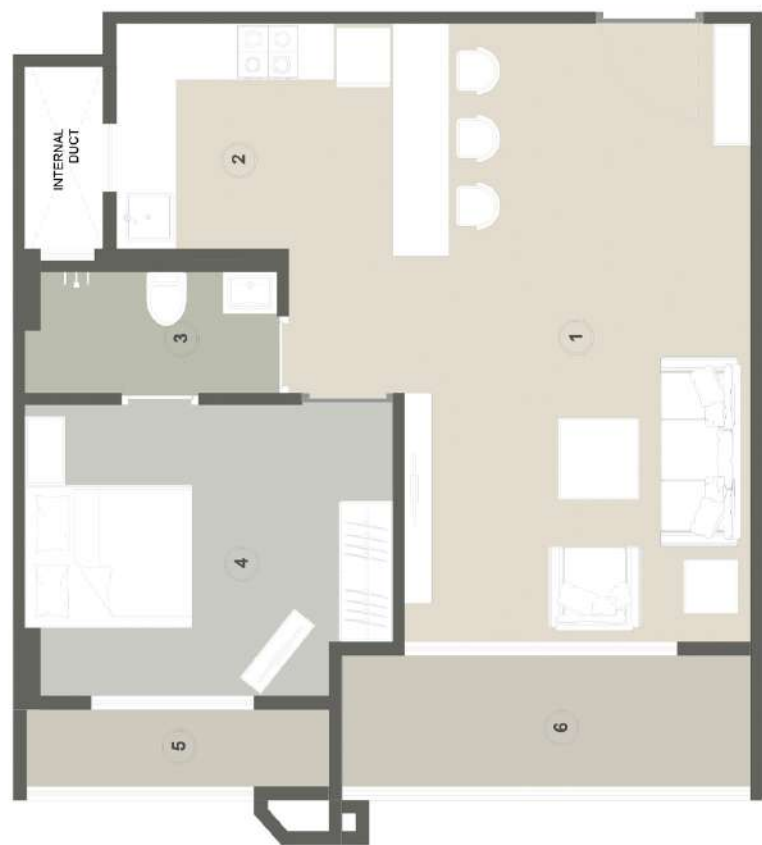
Carpet Area = 54.54 SQ.M
Built Up Area = 63.07 SQ.M
Floor = 4TH, 6TH & 8TH

1 BHK TYPE 4



- | | |
|------------------|---------------------|
| 1) LIVING ROOM | :- 6775MM X 3790MM |
| 2) KITCHEN | :- 2475MM X 3060MM |
| 3) COMMON TOILET | :- 1425MM X 2500MM |
| 4) BEDROOM 1 | :- 3150MM X 4000 MM |
| 5) BALCONY 1 | :- 850MM X 3290 MM |
| 6) BALCONY 2 | :- 1400MM X 4500MM |

Carpet Area = 61.28 SQ.M
Built Up Area = 69.70 SQ.M
Floor = 3RD & 4TH



1 BHK TYPE 5



- 1) LIVING ROOM :- 6775MM X 3600MM
- 2) KITCHEN :- 4175MM X 3900MM
- 3) TOILET :- 2525MM X 1950MM
- 4) BEDROOM :- 4600MM X 2600 MM
- 5) BALCONY :- 1400MM X 2450MM

Carpet Area = 56.04 SQ.M
Built Up Area = 65.04 SQ.M
Floor = 3RD - 8TH



2 BHK TYPE 1



- | | |
|------------------------|---------------------|
| 1) LIVING ROOM | :- 6300MM X 4350MM |
| 2) KITCHEN | :- 4150MM X 3000MM |
| 3) POWDER TOILET | :- 1675MM X 1550 MM |
| 4) BEDROOM 1 | :- 3725MM X 3650 MM |
| 5) TOILET 1 | :- 1675MM X 2600 MM |
| 6) WALK IN WARDROBE 1 | :- 1650MM X 2350 MM |
| 7) BALCONY 1 | :- 3725MM X 1450 MM |
| 8) BEDROOM 2 | :- 4250MM X 5250 MM |
| 9) TOILET 2 | :- 2550MM X 1650 MM |
| 10) WALK IN WARDROBE 2 | :- 1625MM X 1650 MM |
| 11) BALCONY 2 | :- 1450MM X 3650 MM |
| 12) BALCONY 3 | :- 1450MM X 3450 MM |
| 13) BALCONY 4 | :- 1450MM X 3000 MM |
| 14) AC OUTDOOR UNIT | :- 1450MM X 1550 MM |

Carpet Area = 130 SQ.M
Built Up Area = 150 SQ.M
Floor = 3RD

2 BHK TYPE 2



- | | |
|-----------------------|---------------------|
| 1) LIVING ROOM | :- 6300MM X 4350MM |
| 2) KITCHEN | :- 4150MM X 3000MM |
| 3) POWDER TOILET | :- 1675MM X 1550 MM |
| 4) BEDROOM 1 | :- 3725MM X 3650 MM |
| 5) TOILET 1 | :- 1675MM X 2600 MM |
| 6) WALK IN WARDROBE 1 | :- 1650MM X 2350 MM |
| 7) BEDROOM 2 | :- 4250MM X 5250 MM |
| 8) TOILET 2 | :- 2550MM X 1650 MM |
| 9) WALK IN WARDROBE 2 | :- 1625MM X 1650 MM |
| 10) BALCONY 2 | :- 1450MM X 3650 MM |
| 11) BALCONY 3 | :- 1450MM X 3450 MM |
| 12) BALCONY 4 | :- 1450MM X 3000 MM |
| 13) AC OUTDOOR UNIT | :- 1450MM X 1550 MM |

Carpet Area	= 124 SQ.M
Built Up Area	= 144 SQ.M
Floor	= 4TH, 6TH & 8TH

2 BHK TYPE 3



1) LIVING ROOM	:- 6300MM X 4350MM
2) KITCHEN	:- 4150MM X 3000MM
3) POWDER TOILET	:- 1675MM X 1550 MM
4) BEDROOM 1	:- 3725MM X 3650 MM
5) TOILET 1	:- 1675MM X 2600 MM
6) WALK IN WARDROBE 1	:- 1650MM X 2350 MM
7) BALCONY 1	:- 3725MM X 1450 MM
8) BEDROOM 2	:- 4250MM X 5250 MM
9) TOILET 2	:- 2550MM X 1650 MM
10) WALK IN WARDROBE 2	:- 1625MM X 1650 MM
11) BALCONY 2	:- 1450MM X 3450 MM
12) BALCONY 3	:- 1450MM X 3000 MM
13) AC OUTDOOR UNIT	:- 1450MM X 1550 MM

Carpet Area	= 124t SQ.M
Built Up Area	= 144 SQ.M
Floor	= 5TH & 7TH

2 BHK TYPE 4

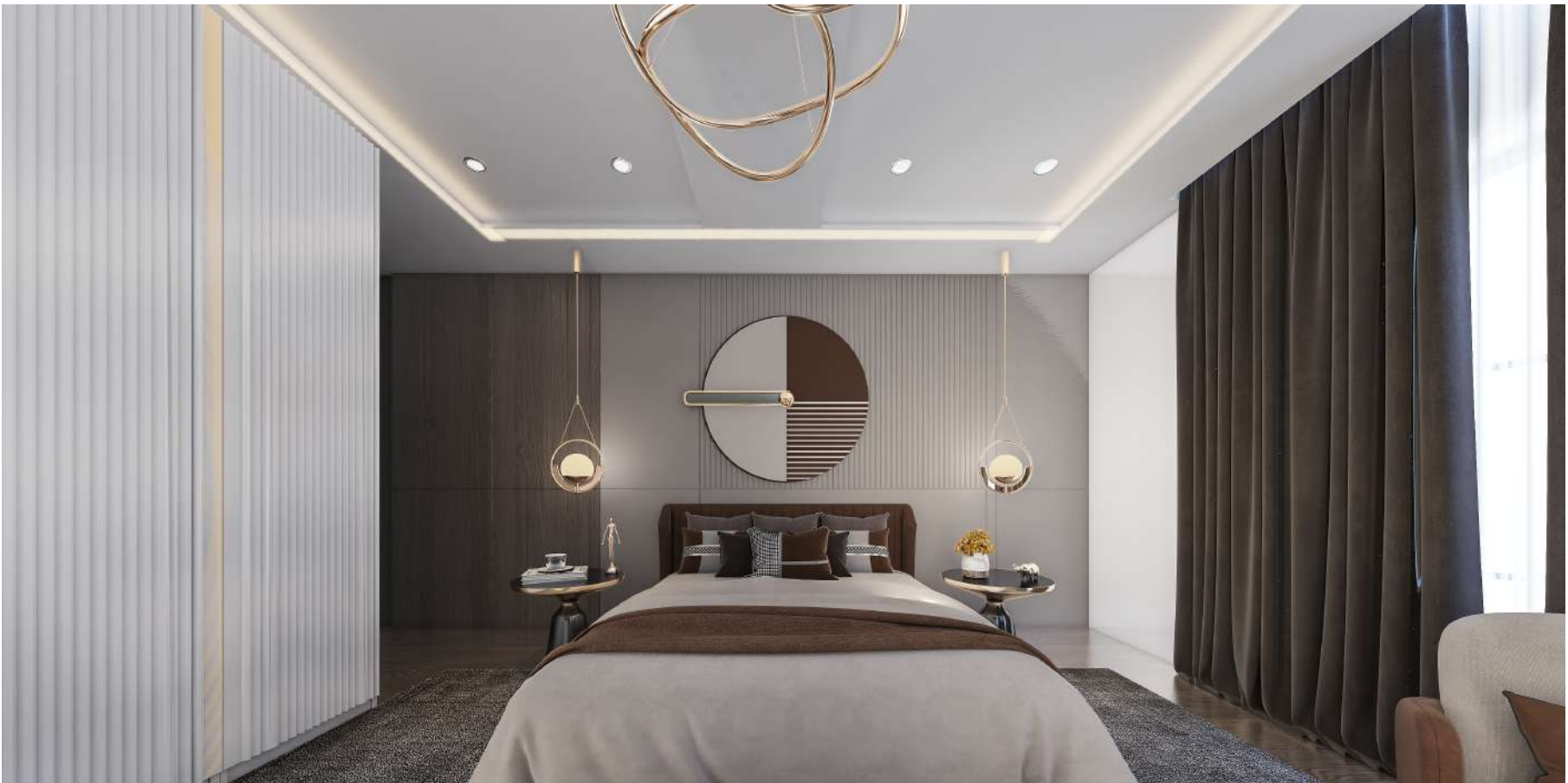


- | | |
|------------------|---------------------|
| 1) LIVING ROOM | :- 6775MM X 4500MM |
| 2) BEDROOM | :- 2850MM X 3290MM |
| 3) COMMON TOILET | :- 2475MM X 1350MM |
| 4) BEDROOM | :- 4100MM X 4035MM |
| 5) TOILET 2 | :- 2050MM X 2960 MM |
| 6) BALCONY 1 | :- 1450MM X 4060 MM |
| 7) BALCONY 2 | :- 850MM X 3290MM |
| 8) BALCONY 3 | :- 1450MM X 4500 MM |
| 9) KITCHEN | :- 2625MM X 2650 MM |

Carpent Area = 91.81 SQ.M
Built Up Area = 104 SQ.M
Floor = 4TH - 8TH

YOUR OWN **Blissful Nirvana**

Experience the luxurious feeling of royalty in a spacious bedroom adorned with premium finishes and stunning views. Indulge in pure bliss and contentment, leaving behind all worldly worries.



Cosy Bedrooms

EXPERIENCE AN

Elegant Parlour



Elegant Living rooms



EXPERIENCE AN

Exclusive Convenience



Sitting Area, Kitchen, & Washroom

EXPERIENCE A

Conductive Study Area



Study Arena



EVERYTHING **Your Heart Desires**

What more could one ask for than a modular kitchen for cooking favorite dishes, an ambient dining area for sharing stories and enjoying delicious meals, and a lavish living area for relaxing and entertaining guests?



BRAVIA



LIVING ROOM

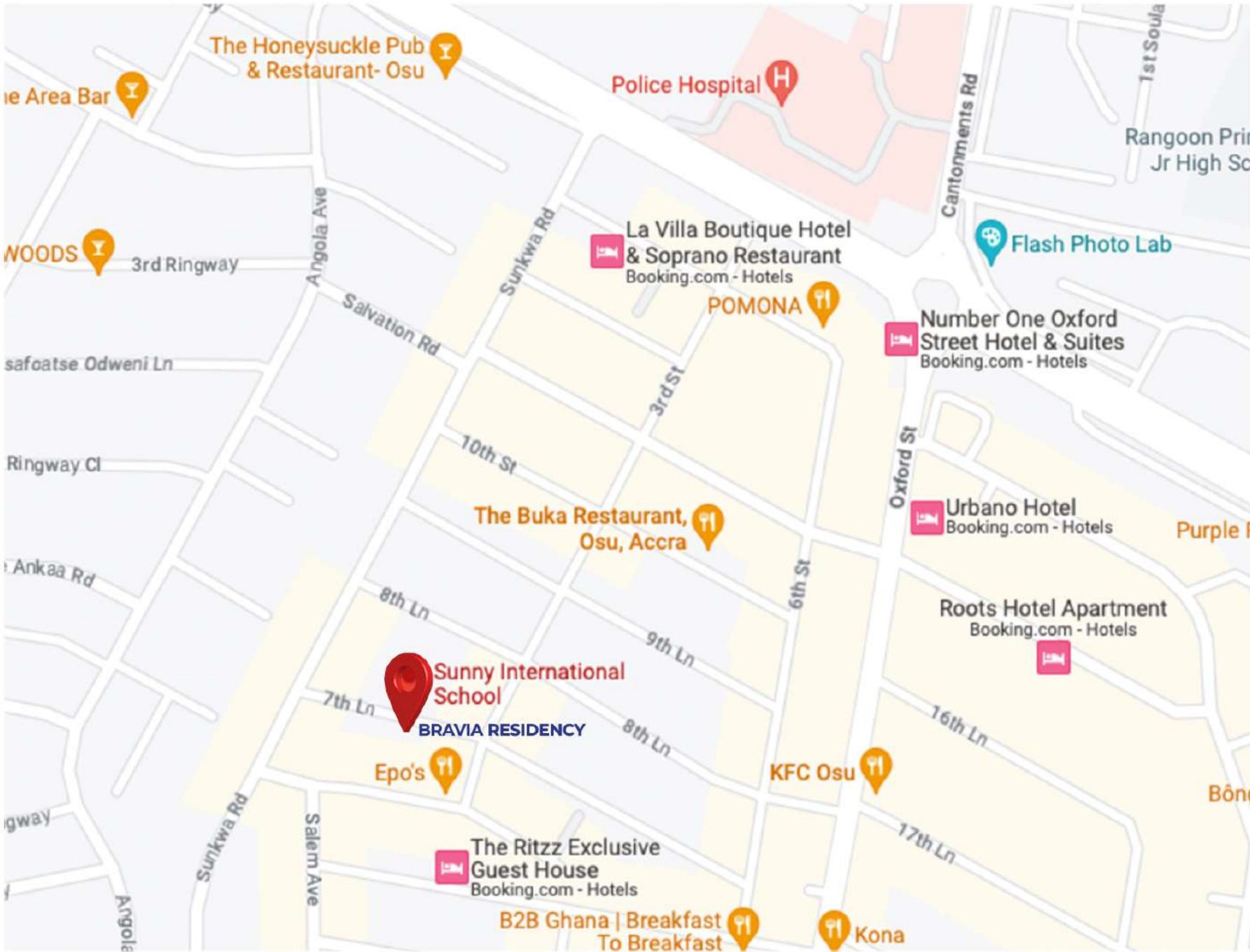


KITCHEN & DINING

AMENITIES

- ✓ Magnificent Entrance
- ✓ Double Height Entrance Lobby
- ✓ Two Service Passenger Elevators
- ✓ Two Staircases
- ✓ Swimming Pool
- ✓ State-of-the-Art Gymnasium
- ✓ Shower, Changing Rooms
- ✓ Cafeteria
- ✓ Facility Management
- ✓ Bar/Lounge
- ✓ Work Out Studio
- ✓ Sky-bar
- ✓ 3-Tier Security
- ✓ CCTV Coverage
- ✓ 100% Power Back Up
- ✓ Constant Water Supply
- ✓ Fiber Broadband Internet Connection





BRAVIA

RESIDENCY

 Papa Monrovia Street (7th Lane), Osu-Accra, Ghana **GPS LOCATION: GA-055-8240**

 **+233 54 609 4576**

 info@ewibuilders.com

 www.ewibuilders.com



SCAN ME

Disclaimer: Images, specifications, features, figures, services, facilities, design and contents set out herein are only indicative and not a legal offering, and are subject to change, without notice, at the sole discretion of the developer. All images are artistic conceptualization for illustration purpose only and do not purport to exactly replicate the product(s)

A PROJECT BY


euro world
international